

<i>Modif.</i>	<i>Ind.</i>	<i>Date</i>	<i>Description</i>			
05 231	A	25 mars 2016	Initial version			
06 169	B	26 octobre 2018	Signed driver			
<i>Approbation</i>						
Qualité		R&D	SAV	Production	Ventes	Achats

Table of content

1.	Introduction	2
2.	Installation procedure for USB driver	2
1.1.1	Driver installation on PC	2
1.1.2	Importation of trusted certificate	2
1.1.3	Driver update	5

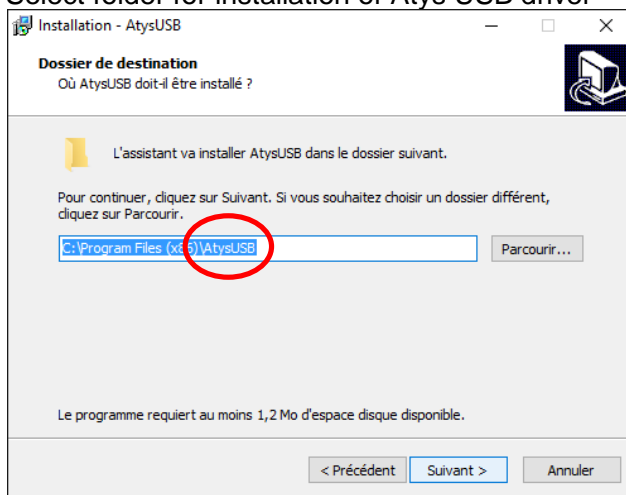
1. Introduction

USB driver is required to allow Atys device to work with ADMS Software (Atys Data Management Software).

2. Installation procedure for USB driver

1.1.1 Driver installation on PC

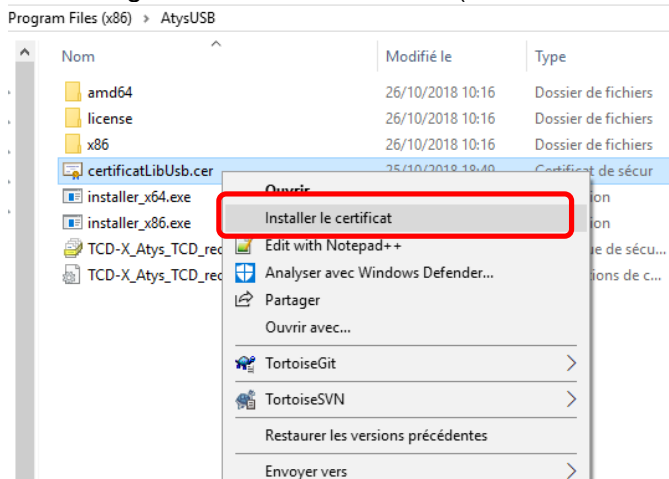
- Launch installation software « **install_driver_USB_Atys.exe** »
- Select folder for installation of Atys USB driver



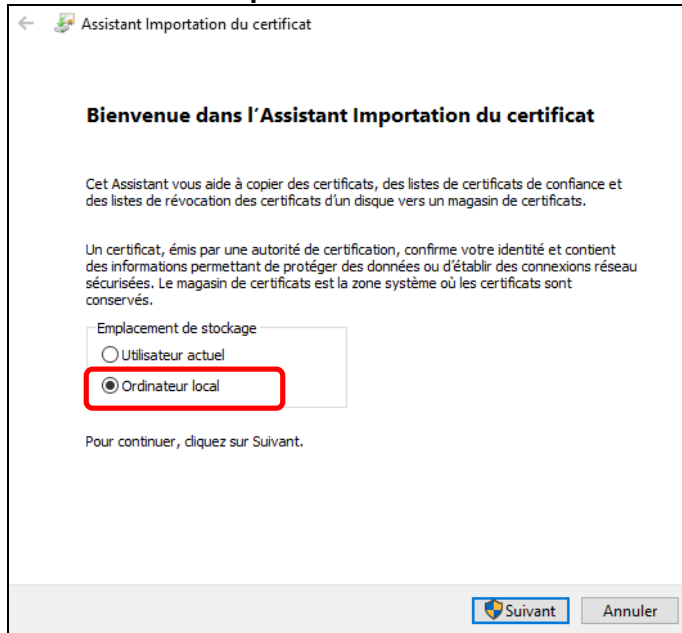
- Click on **Install** to launch driver installation

1.1.2 Importation of trusted certificate

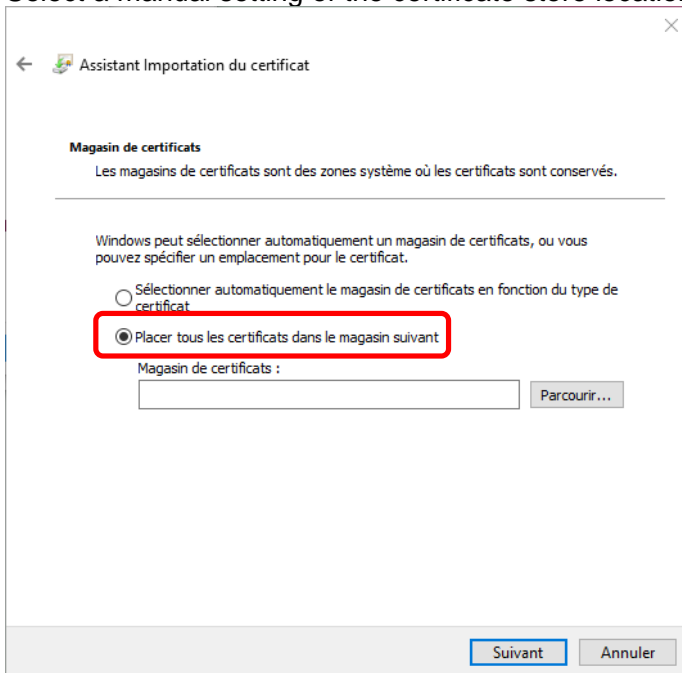
- Go in file where driver was installed during previous step (« Program Files\AtysUSB »)
- Make a right-click on certificate file («**certificatLibUsb.cer** ») and select « Install certificate »



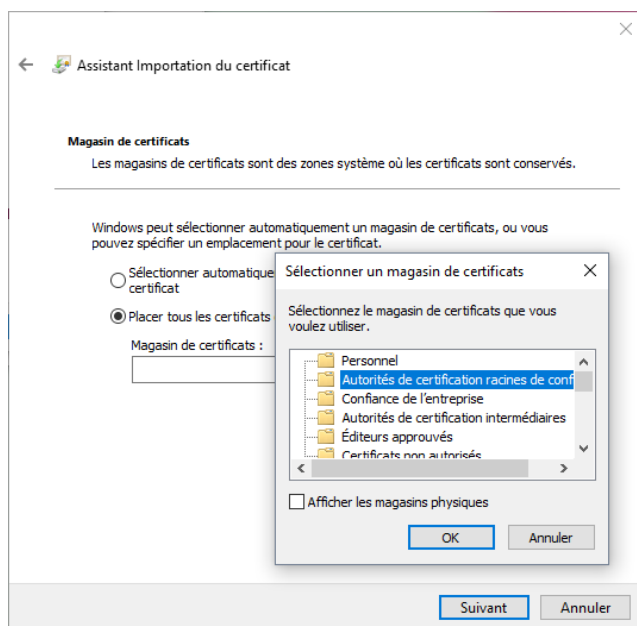
- Select « **local computer** » to create the trusted certificate



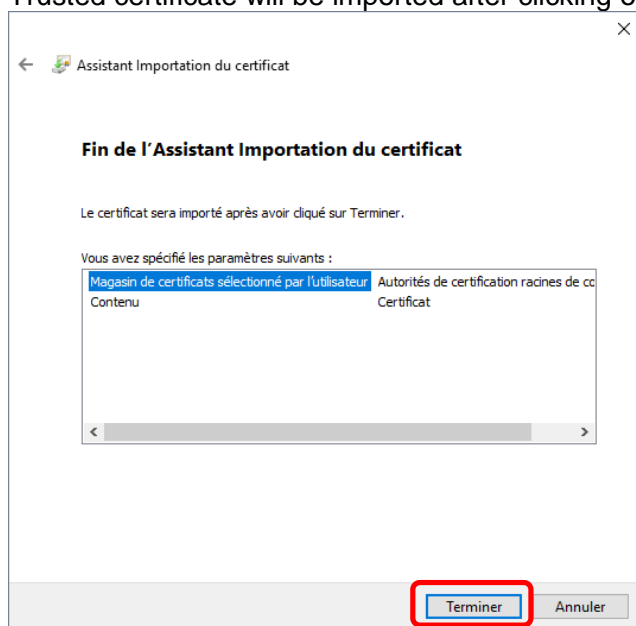
- Select a manual setting of the certificate store location:



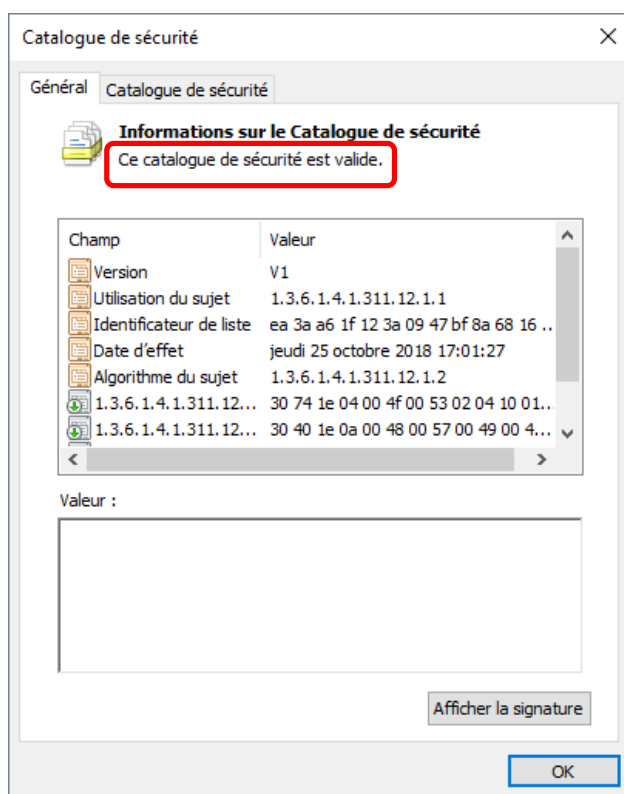
- Select the certificate store below (« **Trusted Root Certification Authorities** »):



- Trusted certificate will be imported after clicking on « **Finish** »

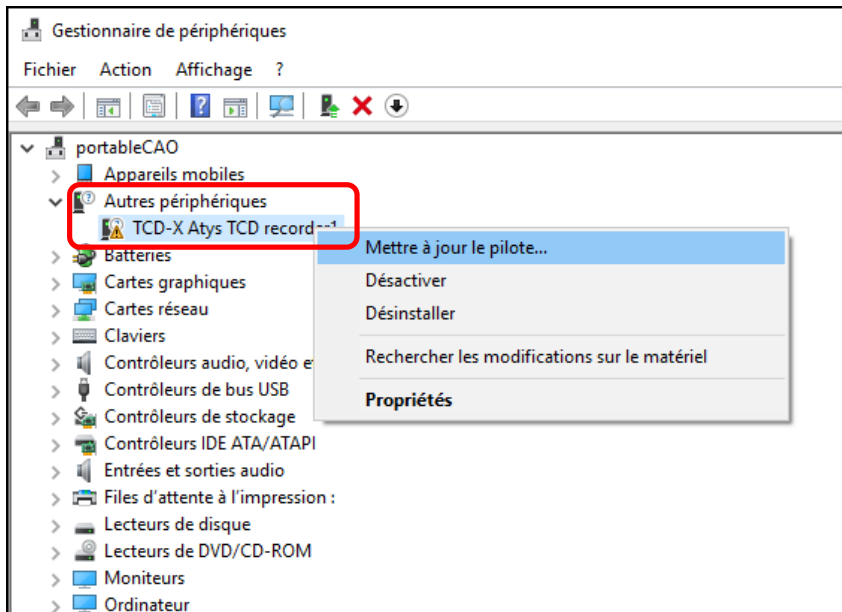


- To check that trusted certificate has well been imported, you can double-click on *.cat file and check that the certificate is valid :

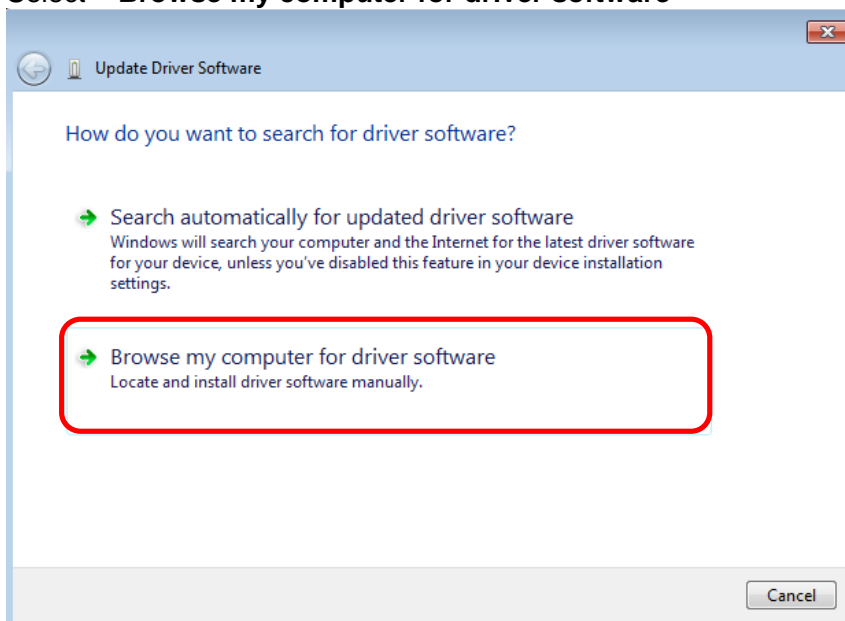


1.1.3 Driver update

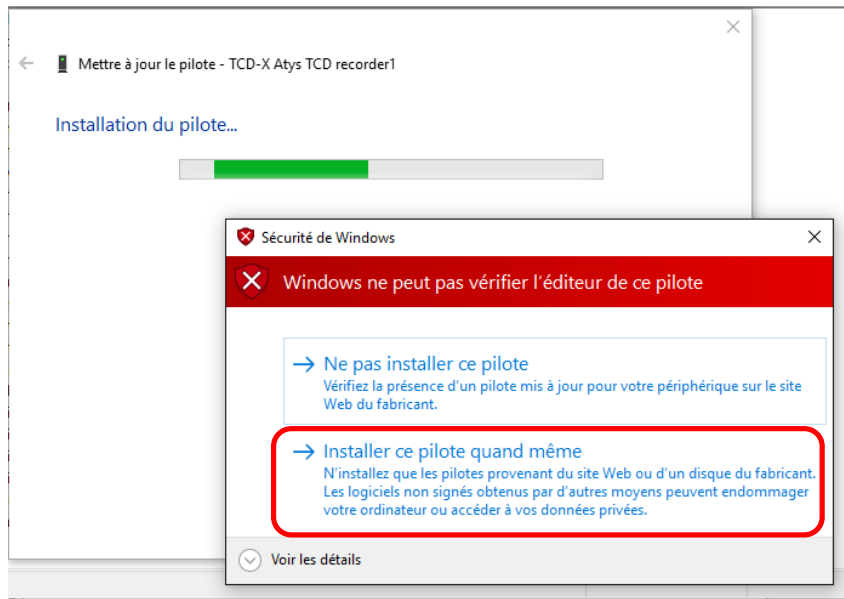
- Connect Atys device to PC through USB cable then switch on device.
- Go to "Device Manager" (NB: under Windows 10, you can right click on Windows icon at bottom left side of screen)
- Right-click on Atys module name (ex : *TCD-X Atys TCD Recorder*) in « Other devices » and select « **Update driver** »



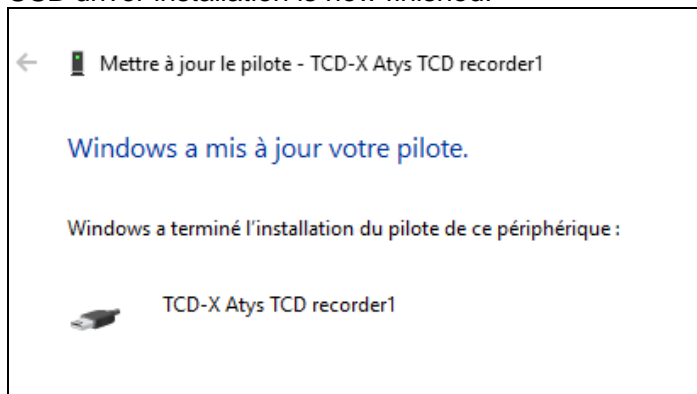
- Select « **Browse my computer for driver software** »



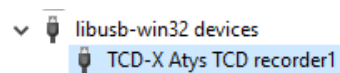
- Force driver installation : « **Install this driver software anyway** »



USB driver installation is now finished!



NB : USB device is well detected in Device Manager



Reboot PC and check that Atys software can be launched normally.